

KONSULTANT PROSES SDN BHD



OPTIMISTIC

ACTION-ORIENTED

INNOVATIVE

SUSTAINABLE

EXCELLENCE

Innovating New Directions ...



*...DELIVERING EXPERTISE
THROUGH DIVERSITY*

ABOUT US



Konsultant Proses Sdn Bhd, commonly known as KONPRO is a leading multidisciplinary engineering consultancy that offers a broad scope of consulting services to a wide spectrum of clientele. The consultancy spanning over 40 years has enabled the organization to build an impressive track record of completed projects in Malaysia and overseas.

The firm is sought for its expertise and specialisation in the field of agro-based process engineering particularly for the palm oil and rubber industry. In recent years, the firm has established international networks with leading engineering consultancies and technology providers for new technologies and innovative solutions to design state-of-the-art plants. The firm has successfully implemented a number of such manufacturing facilities in Asia, the South Pacific region, Africa and South America. Some of these projects were undertaken under the auspices of international agencies such as the World Bank, Asian Development Bank, United Nations Development Program and the Commonwealth Development Corporation.

In the non-industrial sector, KONPRO undertakes a diversified range of projects comprising residential, commercial and institutional complexes, apart from its involvement in infrastructure projects.

In the field of environmental science and renewable energy, the firm has over the years played a vital role in providing comprehensive solutions to the industry to minimize the effect of industrial pollution and the development of green energy.

KONPRO is fully committed to meet the challenges of the future to remain at the forefront of our industry in the years ahead.



THE KONPRO GROUP

Konsultant Proses Sdn Bhd, is part of a diversified and integrated engineering based Group of Companies, with expertise to undertake major engineering projects involving project management and consultancy for agro-based process plants, chemical and industrial complexes, infrastructure work, property development, environmental engineering and renewable energy.

PRINCIPAL COMPANIES WITHIN THE GROUP INCLUDE:

- Konsultant Proses Holdings Sdn Bhd
- Konsultant Proses Sdn Bhd
- Konsultant Proses (Overseas) Sdn Bhd
- Konpro Renewables Sdn Bhd

ASSOCIATED COMPANIES OF THE GROUP:

- Konpro Energy Sdn Bhd
- Konpro Plantations Sdn Bhd
- Konpro Industries Sdn Bhd



PROFESSIONAL REGISTRATIONS AND ACCREDITATION

Konsultant Proses is registered with the following national and international agencies as Consulting Engineers and Project Managers.

MALAYSIAN AGENCIES

- Jabatan Perdana Menteri (Prime Minister's Department)
- Kementerian Kewangan (Ministry Of Finance / Treasury)
- Kementerian Pendidikan Malaysia (Ministry of Education)
- Jabatan Kerja Raya (Public Works Department)
- Jabatan Alam Sekitar (Department of Environment)
- Perbadanan Air Pulau Pinang dan Melaka
- SYABAS - Syarikat Bekalan Air Selangor
- Perbadanan Kemajuan Negeri (SEDC)
- Petronas (National Petroleum Board)
- Dewan Bandaraya Kuala Lumpur (KL City Hall)

INTERNATIONAL AGENCIES

- IBRD : International Bank for Reconstruction and Development (World Bank)
- ADB : Asian Development Bank
- UNDP : United Nations Development Programme
- JICA : Japan International Corporation Agency
- CDC : Commonwealth Development Corporation

REGULATORY BODIES

- Board of Engineers, Malaysia
- National Water Services Commission (SPAN)



ACCREDITATION

KONPRO's stringent quality management system and standards has earned itself the prestigious ISO 9001:2008 (BS EN ISO 9001:2008) certification from the Department of Standards Malaysia (DSM) and the United Kingdom Accreditation Service (UKAS).



AFFLIATION

KONPRO and its Group of Companies have forged strategic alliances and affiliations with international specialist organisations, research bodies and consulting firms to provide a wide range of consultancy, particularly in the field of green technology and renewable energy.



..... development of new technologies with University of Nottingham Malaysia

OUR VALUES

At KONPRO, we stand for the following values which guide us through in all our dealings with our clients.

Transparent

We operate with complete transparency in regard to our discharge of professional duties at all times.

Meticulous

Our advice and commitment to our clients are of paramount importance.

Collaborative

We work with our clients to achieve efficient and cost-effective goals.

Best-in-Class

We endeavor to give our clients the best in terms of advice, solutions and technology. We maintain high professional standards at all times.

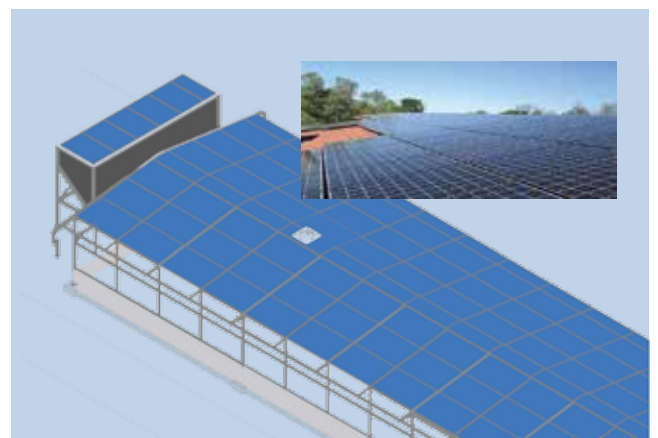
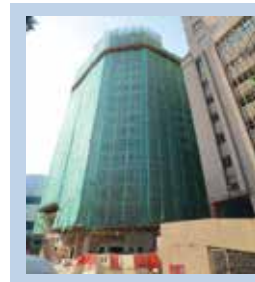
Action-Oriented

We provide quick turnaround times and deliveries and adhere to the principle of being customer-centric.



KEY AREAS OF EXPERTISE

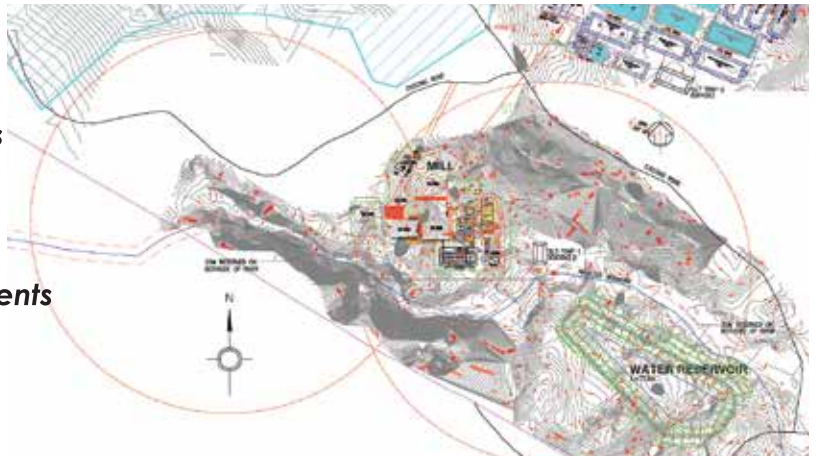
- **Agro-based Industrial Engineering**
 - Processing Plants
 - Material Handling and Bulking Installations
- **Civil and Infrastructure Development**
 - Civil Engineering
 - Structural Engineering
 - Geotechnical Engineering
- **Mechanical and Electrical Engineering**
 - Building Services
 - Power Generation and Transmission
- **Process Control and Instrumentation**
- **Environmental and Pollution Control**
- **Renewable Energy**



SCOPE OF SERVICES OFFERED

KONPRO is a multi-disciplinary consulting firm offering the full spectrum of engineering services in the field of civil, structural, mechanical, electrical, process and environmental engineering from project initiation to completion. In project management, the firm is fully committed to ensure that all projects are completed in the shortest possible time using our expertise and networking to fast-track project delivery. It places great emphasis on safety, quality and budget for all projects managed by the firm.

- **Project Management**
- **Contract Administration**
- **Preliminary Technical Investigations**
- **Preliminary Engineering Design**
- **Detail Engineering Design**
- **Cost Estimates**
- **Preparation of Tender & Bid Documents**
- **Tender Exercise & Evaluation**
- **Construction Supervision**
- **Testing & Commissioning of Plants**
- **Feasibility Studies**
- **Financial Reports**
- **Project Planning**
- **Plant Inspection & Technical Audit**
- **Pre-bid Design & Supervision of Turnkey Projects**
- **Environmental Studies**



AGRO-BASED INDUSTRIAL ENGINEERING



KONPRO is a leading international consultancy in the field of tree crop and seed processing. The firm achieved international recognition for the design of state-of-the-art manufacturing plants for the agricultural sector. Since its inception, the firm has built an impressive track record of over 100 completed and operational plants worldwide, comprising of palm oil mills, kernel crushing plants, refineries, oleo-chemical manufacturing plants, coconut mills, copra mills and rubber factories.

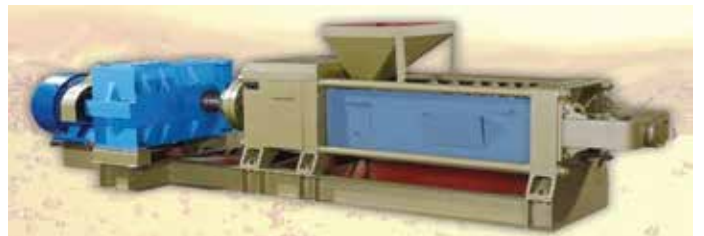
The firm provides comprehensive solutions in civil, structural, mechanical, process, electrical and environmental engineering, including waste treatment facilities to operate under stringent conditions to meet local regulatory requirements and international standards.

KONPRO's professional role has also extended to the preparation of feasibility studies, financial reports and human resource training. Its senior engineers have on many occasions taken up assignments as Technical Advisors to international agencies and as members of fact finding missions to foreign countries, particularly relating to oil palm and rubber processing.



In recent years, KONPRO is actively involved in the training of key personnel and conducting workshop sessions in palm oil and rubber processing for foreign participants under the auspices of UNDP and the World Bank. To complement its role, KONPRO worked with industry experts from PORIM (now MPOB), RRIM and the Guthrie Group (now Sime Darby)

Currently, KONPRO and its associate firms are engaged in the establishment of waste utilisation and energy generation projects for its clients.



Longkali POM, Indonesia

PALM OIL MILLING & PROCESSING

KONPRO's vast experience in the design and development of palm oil mills of different capacities and types of operation, and its familiarity with the business environment and its international exposure, enables the firm to meet the challenges with total commitment. KONPRO, also has the added advantage of having its key personnel with hands on experience in the operation of such plants, either as Managers or Engineers and hence are result oriented.

The firm keeps abreast of the latest technologies in the field and incorporates proven innovations and ideas, to further enhance performance and efficiency.

Some of the completed POM projects:

- *Ladang Kapilit POM, Tawau, Sabah (Sabah Softwood Bhd)*
- *Ladang Seraya POM, Kalabakan, Sabah (Benta Wawasan Sdn Bhd)*
- *Niah POM, Miri, Sarawak (Sarawak Plantation Agriculture Services)*
- *Longkali POM, Balikpapan, Indonesia (PTPN XIII/ADB)*
- *PT Graha POM, Kalimantan, Indonesia (Julong Group, China)*
- *OPIL POM, Kerala India (Oil Palm India Ltd)*
- *Khemaya POM (Government of Republic of Guinea, Africa)*



Benta Wawasan Mill, Sabah



PALM OIL REFINING & OLEO-CHEMICAL MANUFACTURING

KONPRO has the expertise for the establishment of down-stream processing facilities relating to refining of palm oil and the manufacture of oleo-chemicals. The firm has the capacity and capability to design and undertake such projects in close association with technology providers and world class equipment manufacturers.



ASSAR Refinery Complex, Sarawak



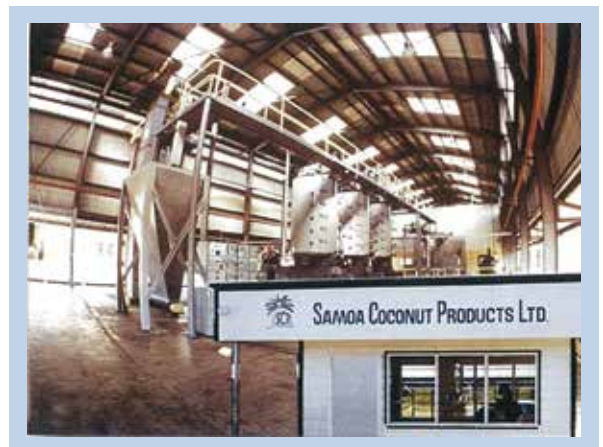
Grandeé Biodetergent Plant, Pahang

PALM KERNEL & COPRA PROCESSING

KONPRO has been involved in the development of palm kernel crushing and copra processing plants for its clients in Malaysia and overseas since the early 1980's.

Over the years, the firm was involved in the establishment of a number of palm kernel crushing plants of various capacities, either on its own or as an integrated processing facility. In recent times, the firm was commissioned by IJM Plantations to design their 200/600 tonnes per day plant in Sabah and by Austral Edible Oil to expand its capacity to 400 tonnes per day.

The firm has been involved in offering its consulting services to the coconut industry since the early years. In 1981, it was involved in the design and commissioning of a copra processing complex using advanced process techniques in Apia, Western Samoa for the Government of Western Samoa financed by the Asian Development Bank. The firm continues to offer its services to various coconut growing establishments in Asia and the Pacific countries to design or upgrade their existing manufacturing plants to cater for a wide range of products.



RUBBER PROCESSING

KONPRO has been actively involved in the design and commissioning of rubber factories for the production of latex concentrate, crumb rubber, pre-vulcanised and speciality rubbers for the local plantation industry and foreign clients.

In the early years, the firm was actively involved in the design, construction and commissioning of RSS and ADS rubber factories for RISDA in their rubber growing schemes nationwide.

Some of its major clients are:

- *Ministry of Agriculture, Indonesia*
- *RISDA , Malaysia*
- *Revertex Group (UK, Malaysia and Indonesia)*
- *PT Perkebunan, Indonesia*
- *Rubber Development Corporation, Vietnam*



PROPERTY DEVELOPMENT AND URBAN PLANNING

The firm offers complete consulting services for property and real estate development. In areas where special expertise is required, the firm works in association with other professionals or organisations, particularly for the preparation of master plan studies and urban planning.

For most of the projects undertaken by the firm, we provide the civil, structural, mechanical and electrical engineering consulting services. This scope also extends to preparation of feasibility studies, project reports, EIA studies and project management.

The types of projects undertaken include:

- Residential and housing estates
- Industrial complexes
- Schools and colleges
- Sports facilities and auditoriums
- Office Complexes
- Mosques and suraus



INFRASTRUCTURE DEVELOPMENT WORKS

KONPRO has been involved in infrastructure development work relating to earthworks, slope protection and remedial works, design of rural roads, bridges, sewerage systems, water supply, reservoirs, wharves and jetties. Most of these works were carried out using its own resources, except where special expertise and additional resources were required to fast track the particular project.



LIQUID BULKING INSTALLATION AND TERMINALS

KONPRO has extensive experience in the planning, design, supervision and commissioning of multi-product bulking installations, storage facilities and product handling terminals. In some cases, our scope also included the preparation of feasibility studies and project management.



ENVIRONMENTAL ENGINEERING

KONPRO's long association with the agro-based industry has placed us in the forefront to develop and provide sustainable solutions to environmental issues and waste treatment affecting the plantation processing sector. Our waste treatment and pollution control systems, nurtured and developed over the years is now almost an industry standard. We continue to develop on our own or in association with other specialists to find new solutions to mitigate environmental impact issues and promote economically viable solutions for the agro-based industry.

KONPRO was engaged by the Government of Indonesia under the auspices of the World Bank to carry out a nationwide environmental study affecting the oil palm and rubber industries and to propose new technologies to mitigate the issues and as an extension to promulgate environmental policy for these industries in Indonesia. KONPRO is consulted regularly by the oil palm growing nations on pollution abatement and solutions.



KONPRO is now consulted by other industries to design their waste water treatment facilities to meet their operating requirements and complying with stringent environmental standards. It is also involved in developing corporate environmental programmes, conducting due diligence and environmental audits for its clients.



RENEWABLE ENERGY



In line with global initiatives to develop and promote renewable energy to mitigate global warming, environmental degradation and diminishing fossil fuel resources, KONPRO and its associate companies are actively involved in finding sustainable green energy from biofuel, agricultural waste, wind, solar and marine sources. The Group through active collaboration and strategic alliances with technology providers and energy specialist institutions are now able to offer comprehensive solutions to its clients.

Our engineers and specialists focus on innovative and practical solutions to develop policies and programmes and undertake sustainable projects for our clients with special emphasis on reliability, efficiency and revenue generation while meeting regulatory requirements and environmental goals and objectives.

KONPRO is actively involved in the implementation of palm biomass power plants under the small renewable energy programmes (SREP), biogas cogeneration plants and use of solar energy for heating. The firm is also actively involved in the implementation of biodiesel and glycerin manufacturing plants and the development of technologies to use palm waste as a fertilizer.



MASTERPLAN STUDIES AND PROJECT REPORTS

The firm has carried out various feasibility studies and the preparation of financial reports for agricultural development projects and processing facilities for the Malaysian agricultural sector and their counterparts overseas. In some cases, the scope extended to development of down-stream activities and establishment of renewable energy projects, utilising agricultural waste. Some of the most recent projects were carried out in Indonesia, India, Philippines, Laos, Africa and South America.

Apart from the agricultural development ventures, the firm is involved in preparation of master plan studies and financial reports for real estate development, comprising of residential development, industrial parks, recreation and resort facilities. Some of these projects were carried out by the firm in association with foreign professional organisations.



HUMAN RESOURCE TRAINING AND WORKSHOPS

The firm has been associated with human resource training for managerial and key technical personnel for agro-based industries, particularly in palm oil and rubber processing for over three decades. The courses are tailor-made to suit specific needs of the organisation and comprise of on-the-job training and understanding of the crop cultivation and post-harvest processing.

In recent years, the firm has undertaken formal training programmes and conducted study tours for foreign participants seeking expertise from Malaysia. Most of these programmes were under the auspices of international agencies and foreign organisations, such as UNDP, UNIDO, World Bank, FAO and the Asean Food Bureau. The firm associated with large plantation groups, MPOB, RRIM, ISP and other accredited organisations to carry out the respective programmes.

The firm has actively participated in conferences, seminars and workshops to partake in their activities and presented papers.

The firm has over the years accepted engineering undergraduates from local universities and institutions of higher learning for internship and continues to do so.



..... Looking Back



OUR MAJOR CLIENTS



KONSULTANT PROSES SDN BHD

Project Managers & Consulting Engineers (18099-U)

Wisma KONPRO

1 Persiaran Teknologi Subang,
Subang Hi-tech Industrial Park,
47500 Subang Jaya,
Selangor Darul Ehsan, Malaysia.

T +603 5633 4088 / 03 5633 6636 (*Hunting*)

F +603 5634 7930

E info@konpro-group.com

W www.konpro-group.com